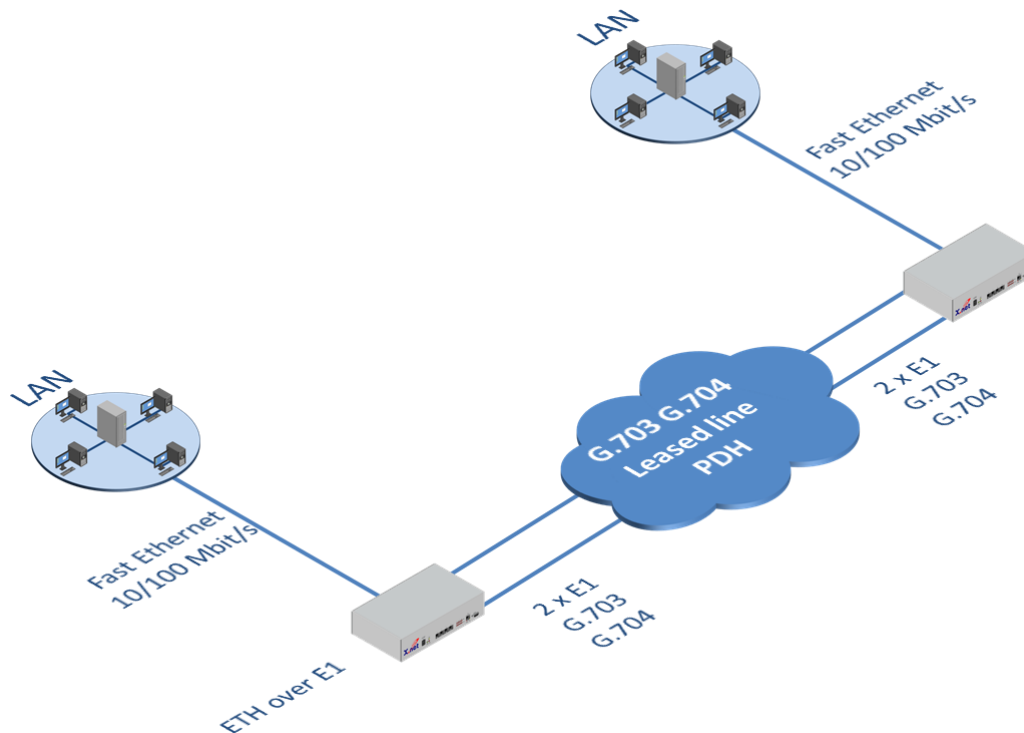


# Ethernet over E1

## Fast Ethernet over 1 or 2 E1 (managend)



- **Built-in intelligent switch fabric and provide 4-port fast Ethernet**
- **Support 2047 bytes Frames**
- **Up to 2K MAC address entries**
- **Support IEEE802.1Q VLAN and QinQ double tagging**
- **Support HDLC/PPP-BCP(RFC3518)/GFP-F encapsulation**
- **Support E1 frame or unframe application**
- **Provide statistics for each E1 channel**
- **Configure via CLI/Web/SNMP(v1/v2c)**
- **Support software and firmware upgrade**

### Product description

The Ethernet over E1 converter transmits up to four Fast Ethernet interfaces via one or 2 E1 interfaces. The installation is kept very simple and can be carried out without configuration via PC in the delivery state.

In the event that the user wishes to administer the devices remotely, the device offers a Web Management interface. It is also possible to send SNMP traps to network management system.

The status LEDs on the front provide information about the current status of the individual interfaces and the operating status.

The desktop version can also be installed as a 19" device. A 19" mounting bracket is supplied as standard.

A very convenient option for supplying the device with power is offered by the new integrated power supply, which allows operation of 100 ~ 265 VAC and 48 VDC. Both options are included in the scope of delivery.

Thus you have a universally usable device with all accessories in the scope of supply. During the installation you don't have to think about whether you have ordered the right device for AC or DC operation and whether the device should be used for 19" installation or as a desktop device.

# Ethernet over E1

## Fast Ethernet over 1 or 2 E1 (managend)

### Specifications

#### E1 Interfaces

Interface Standard: G.703 G.704  
 Impedance/ Connector: 120 Ω, balanced, RJ-45 / 75Ω, unbalanced, BNC  
 Data Rate and Line Code: 2.048 Mbit/s , HDB3  
 Line Protection: 15 KV ESD Protection , 6KV/42Ω Surge Protection

#### Ethernet Interfaces

Number of Ports: 4  
 Type: 10/100 Mbps, auto-neg., full/half duplex, MDI/MDX Crossover  
 Compliance: Relevant sections of IEEE 802.3  
 Max Frame Size : 2047 bytes  
 Connector Type: RJ-45 , Cat.5  
 Line Protection: Built-in 1.5 KV Magnetic Isolation Protection, 6KV/42Ω Surge Protection

#### Encapsulation Protocols

HDLC  
 GFP-F(ITU-T G.8040, G.7041/Y.1303)  
 VCAT (ITU-T G.7043)  
 LCAS (ITU-T G.7042)  
 PPP/BCP(RFC 3518)

#### Internal Bridge

Number of VLANs : Up to 16  
 Compliance: Relevant sections of 802.1Q and QinQ double tagging  
 LAN Table: Up to 2K MAC Addresses (learned)

#### Management Ports

Console Port  
 Interface standard: RS-232  
 Connector: RJ-45  
 Data rate: 115.2 kbps  
 Web GUI  
 Firmwareupdate via Web GUI

#### Physical Characteristics

Housing: Metal  
 Weight: 1.0kg  
 Dimensions: 210 x 142 x 41mm

#### Environmental

Operating Temperature: 0 to 50°C  
 Storage Temperature: -40 to 70°C  
 Ambient Relative Humidity: 10 to 95% (non-condensing)

#### Power Requirements

AC:100-240VAC(±10%),50/60Hz  
 DC:-48VDC(36-72VDC)  
 Power Consumption: <5 watts



### Ordering Information

#### Function Description

Fast Ethernet over 1 E1 converter  
 Fast Ethernet over 2 E1 converter

#### Article no.

5-003-1001  
 5-003-1002